



FACTS AND INFORMATION

WWW.THEBLUELEAF.COM.PH



WHO WE ARE

The Blue Leaf is a banquet services company.

We provide venues for clients organizing events for 50 to a 1,000 guests. We also provide facilities to support each event's operational needs. Lastly, we provide event services and support through a combination of internal staff resources and external event service providers. Our goal is to deliver results that exceed client's event expectations.



COMPANY HISTORY

The Blue Leaf was conceptualized in 2004 when the Manila banquet services market began a shift towards non-traditional venues. At the time, there were no serious venue choices available apart from the hotels that were in operation.

In May 2006, after 2 years of product development and site searches, Seven Tall Trees Events, Inc. signed a long-term lease agreement with Megaworld Corp. for 5,000 sq.m. of vacant land on Park Ave. in McKinley Hill Village, Taguig City. Construction began soon thereafter and The Blue Leaf Events Pavilion began partial operations on May 19, 2007.

In August 2012, Seven Tall Trees Events, Inc. signed another long-term lease agreement, this time with ASEANA Holdings, Inc. for 5,800 sq.m. of vacant land in ASEANA City in Paranaque City for the purpose of establishing a second events venue in Metro Manila. Construction began in December 2012, and, in September 2013 The Blue Leaf Filipinas received its first wedding.

In February 2015 Seven Tall Trees Events, Inc. signed its third long-term lease agreement, this time with Robinson's Land, Inc. for 5,000 sq.m. of land in Robinson's Bridgetowne in Libis, Quezon City. Construction began on September 19, 2015. The Blue Leaf Cosmopolitan is scheduled to open in the third (3rd) quarter of 2016.

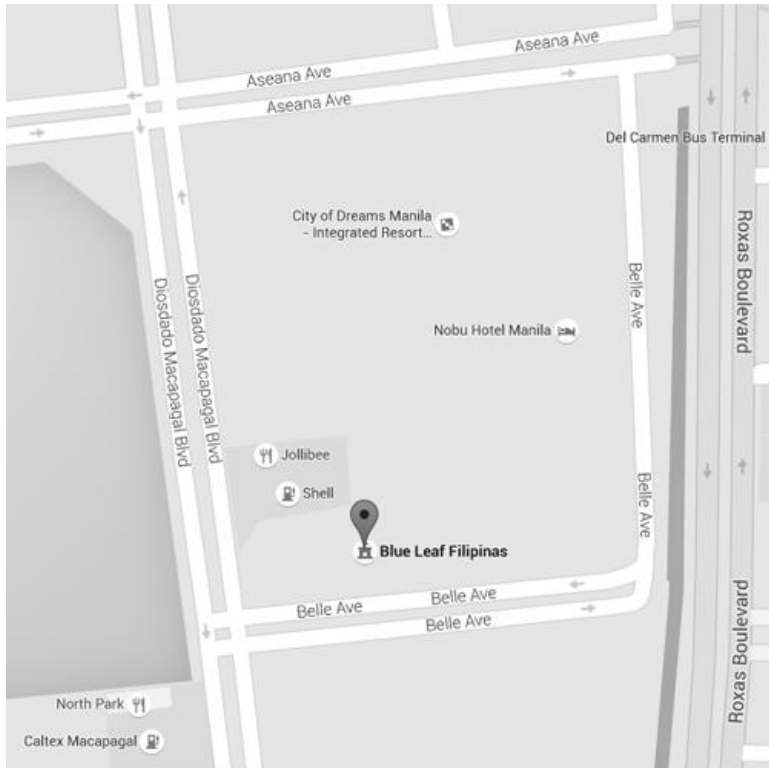
The Blue Leaf continues to seek new opportunities to replicate the successful business model it has been enjoying. The Blue Leaf believes that the growing market demand for banquet services can support the expansion of The Blue Leaf in important city centers in Metro Manila as well as growing city centers in Central and Northern Luzon.



LOCATION

Belle Avenue, ASEANA City, Paranaque City | 1633 Philippines

ASEANA City is a landscape green city along the shoreline of Manila Bay that spans 1.2 kms. along Roxas Boulevard. This expansive land of approximately two hundred four (204) hectares is future grounds for homes, offices, malls, hotels, casino and even a yacht club.



HALLS

SINULOG | PAHIYAS | PINTADOS

VENUE AND CAPACITY

VENUE	BANQUET	COCKTAIL	THEATRE	CLASSROOM
SINULOG	500	850	600	300
PAHIYAS	300	550	400	200
PINTADOS	200	350	300	100

FUNCTION ROOMS

CARINOSA | HARANA | KUNDIMAN

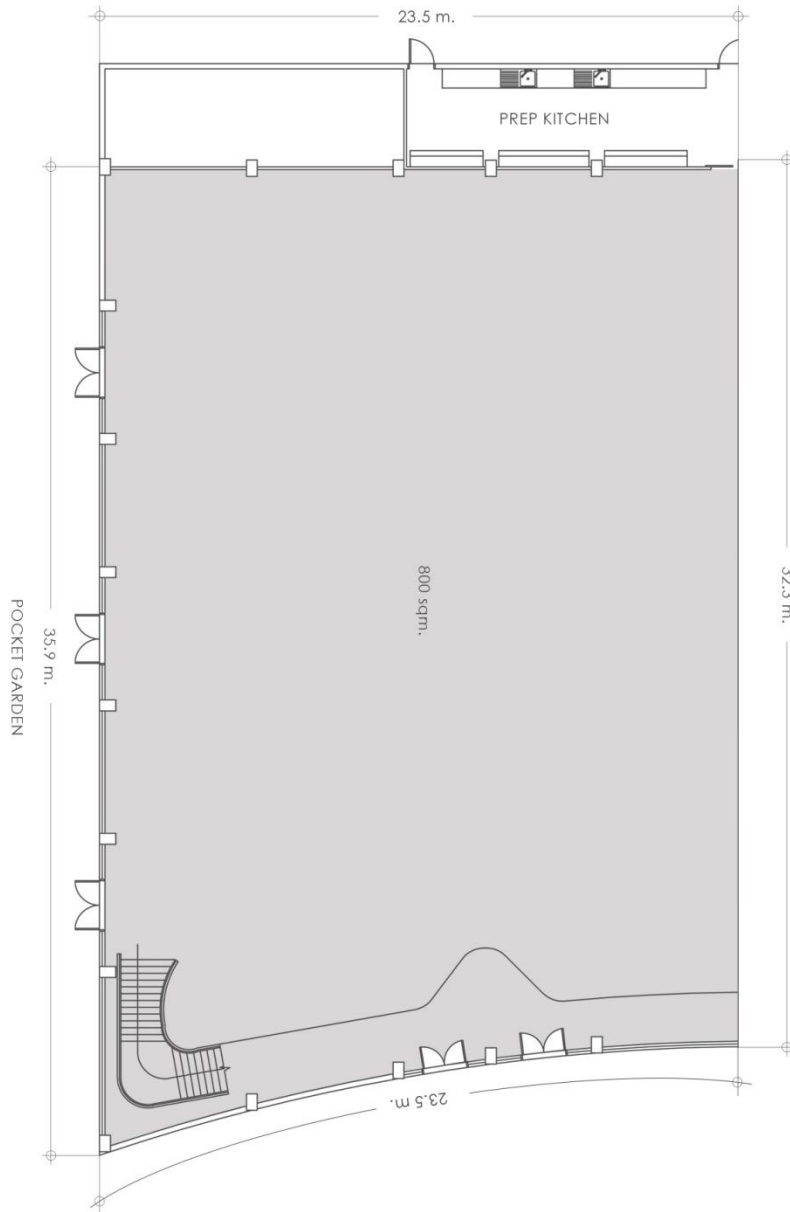
VENUE AND CAPACITY

VENUE	BANQUET	COCKTAIL	THEATRE	CLASSROOM
CARINOSA	50	75	55	40
HARANA	50	75	55	40
KUNDIMAN	50	75	55	40



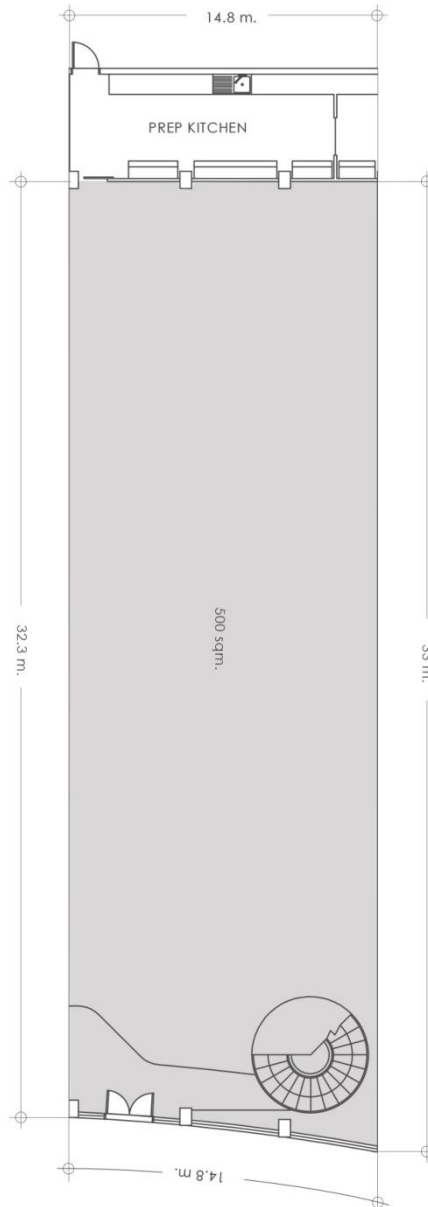
SINULOG HALL

Area : 800 sqm | Height : 7m | Length : 32.3m | Width : 23.5m | Seating Capacity : 500 guests



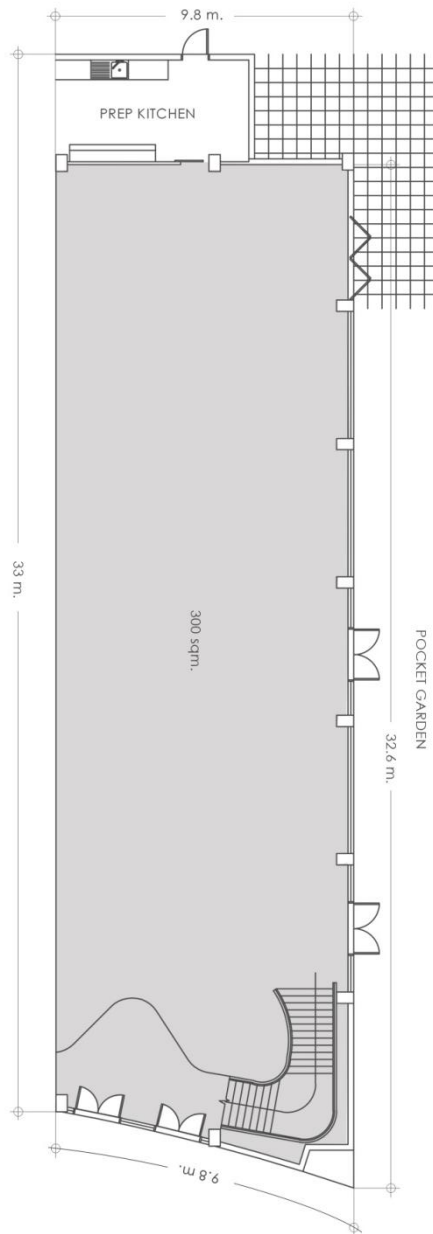
PAHIYAS HALL

Area : 500 sqm | Height : 7m | Length : 32.3m | Width : 14.8m | Seating Capacity : 300 guests



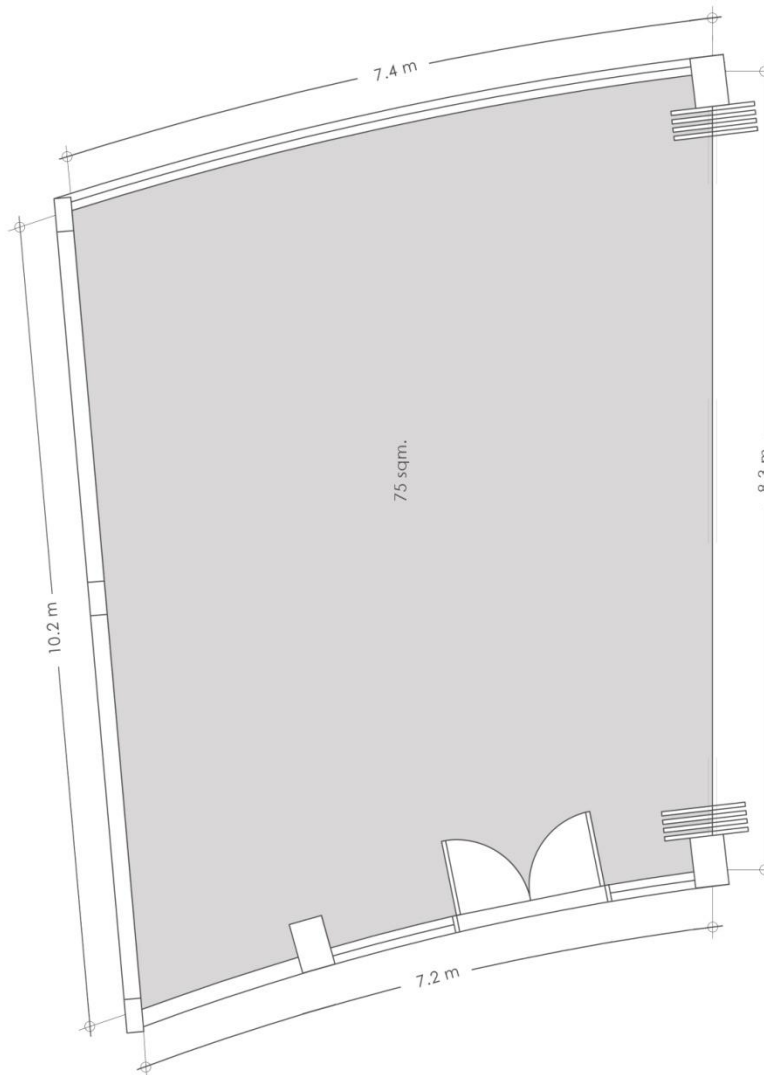
PINTADOS HALL

Area : 300 sqm | Height : 7m | Length : 32.3m | Width : 9.8m | Seating Capacity : 200 guests



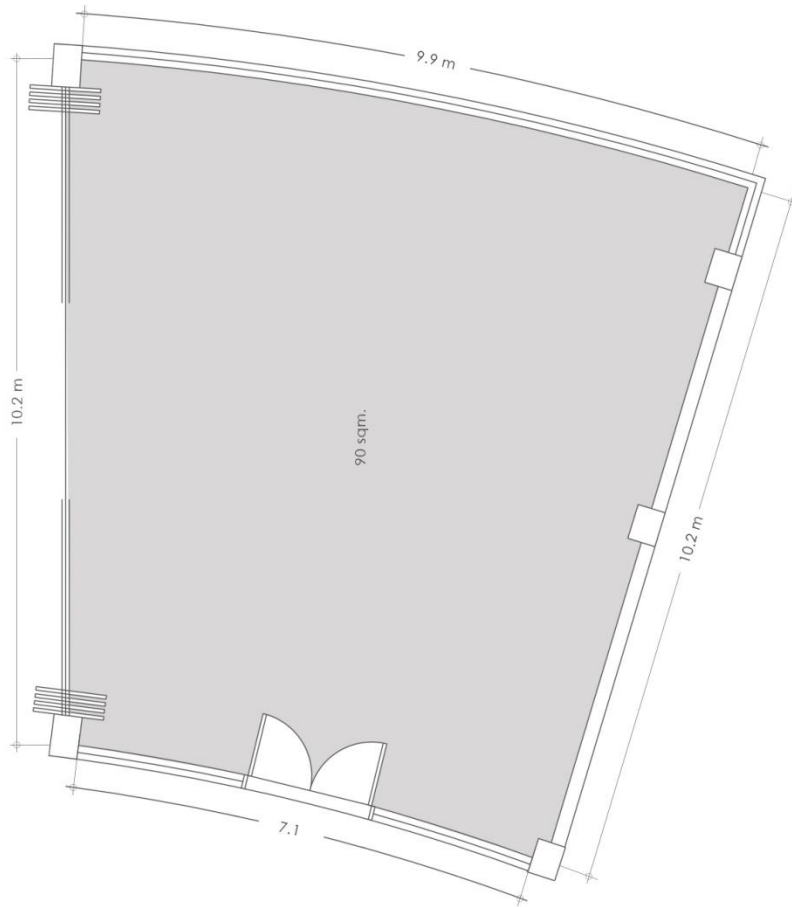
CARINOSA FUNCTION ROOM

Area : 75 sqm | Height : 2.4m | Length : 10.2m | Width : 7.4m | Seating Capacity : 50 guests



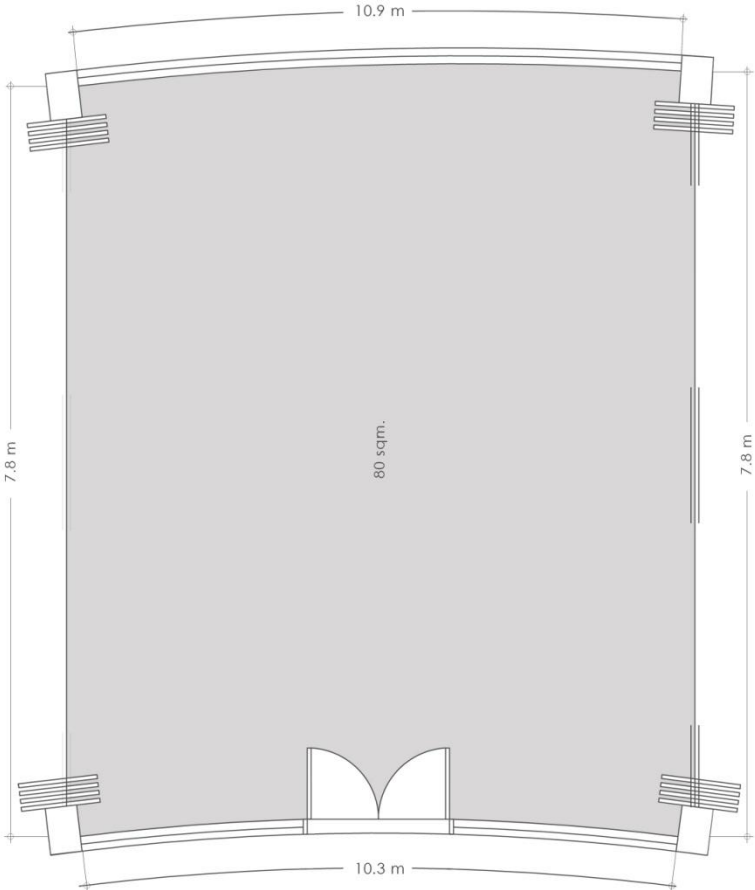
HARANA FUNCTION ROOM

Area : 90 sqm | Height : 2.4m | Length : 10.2m | Width : 9.9m | Seating Capacity : 50 guests



KUNDIMAN FUNCTION ROOM

Area : 80 sqm | Height : 2.4m | Length : 7.8m | Width : 10.9m | Seating Capacity : 50 guests



HALL FEATURES

Provision for external decorations and styling

Power outlets along perimeter and floor of hall

Stage panels

Podium

Halls are non-smoking areas. Smoking is welcome along adjacent corridors and gardens

HALL LOUNGE

Lounge adjacent to each hall

Living area

Private toilet

Telephone

Complimentary wireless internet

Power outlets

FUNCTION ROOM FEATURES

Provision for external decorations and styling

Power outlets along perimeter and floor of function room

Platform

Podium

Function Rooms are non-smoking areas. Smoking is welcome along adjacent corridors and gardens

AUDIO VISUAL FACILITIES

Built-in hall sound system with wireless microphone

Audio-Visual control booth with multi-input mixer and media player

5000-lumens LCD projector with screen

Upgrade to 9ft. X 12ft. LED wall available

ELECTRICAL POWER

60 Amperes supply per hall (for lighting and sound systems)

20 Amperes supply per function room (for lighting and sound systems)

Upgrade to 100 Amperes electrical power available

Back-up generator set

Provision for external generator set provider connectivity



STAFF SUPPORT

The venue makes available ample staff on the day of the event:

- Housekeeping
- Engineering
- Security
- Valet

BUSINESS CENTER

- Printing
- Photocopying
- Basic office supplies
- Event concierge services available
- Event supplier library available
- Facsimile

SERVICE AREA

- Caterer's area adjacent to each hall
- Stainless steel tables
- Plumbing and water supply
- Basic ventilation
- Basic electrical power supply
- Outdoor cooking available with conditions
- Service staff toilets

PARKING

- Guest parking slots within the property
- VIP parking
- Proximity to open parking lot and parking building
- Complimentary valet parking services



SAFETY FEATURES

Presence of Automatic Fire Suppression System

Fire Detection Systems

Fire Extinguisher

The Blue Leaf Staff are trained to be first responders for fire and earthquake incidents

EMERGENCY SERVICES

Government-licensed security staff

Closed Circuit Television System

Accessibility to village police centers

Accessibility to city police centers

The Blue Leaf staff are certified medical first responders

Basic medical supplies within property

Access to nearby private hospital

Ambulance service

OTHER FEATURES AND AMENITIES

Landscaped grounds

Water features

Complimentary wireless internet

Two sets of guest toilets

TRUSTED PACKAGES

Awards Night Package

Christmas Party Package

Cocktail Package

Conference Package

Corporate Anniversary Package

Half Day Meeting Package

Milestone Birthday Celebration Package

Prom or Grad Ball Package

Stockholder's Meeting Package

Wedding Package

Whole Day Meeting Package

